

**TUESDAY
14TH DECEMBER**

CAROL CONCERT AT SALISBURY CATHEDRAL



Depart Oxted 8.30am (Route A) for the beautiful city of Salisbury. Here you will be at leisure to explore the streets flanked by gabled houses and the modern shopping centre. We'll then make our way to the magnificent Cathedral and take our seats for the 1.00pm Traditional Christmas Carol Concert with the Cathedral Choir, followed by a glass of mulled wine and a mince pie. We shall then have a little more time for exploring Salisbury before leaving at 5.00pm. Arriving back at Godstone by approx. 7.00pm.

Cost £34.95 (Inclusive of Coach/Carol Concert/Mulled Wine and Mince Pie)

2011

**SATURDAYS 15TH AND
29TH JANUARY**

ENERGIA – THE BRIGHTON ICE SHOW

Depart Oxted 9.30am (Route A) for Brighton giving time to explore the town and have lunch before making your way to the Brighton Centre for the 1.30pm performance of Energia – a production that no one thought possible. With its revolutionary three-dimensional setting, you will be whisked into the great universe where planets spin around you in glorious colours and spectrums of light.



On the ice, the skating elite perform breathtaking feats that will have you on the edge of your seat! With scintillating choreography, magnificent costumes, music composed especially for Energia, world class skaters and, not forgetting, Ein and Stein, the adorable clowns, with their off-the-planet humour you will be enthralled from the minute you take your seat to the mind-blowing finale. Return after performance. Arriving back at Godstone by approx. 5.30pm.

Adult £41.25 Child £26.95 (Inclusive of Coach/Super Premier Seats at Show)

**SUNDAY
23RD JANUARY**

MODEL ENGINEERING EXHIBITION – ALEXANDRA PALACE



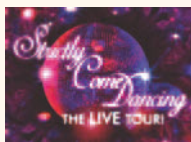
Depart Oxted 8.30am (Route A) for Alexandra Palace and the south's largest Model Engineering Show, bringing together model engineers, craftsmen and model making enthusiasts in a vibrant, interactive show.

See over 1000 fantastic scale models from the age of steam to the present day! Large scale model live steam railway layouts give the opportunity not only to see the models in action but also to see many scale locomotives being prepared for their runs. Hot air and stationary engines will also be operating. Club members and stewards are on hand to talk about their hobby and the individual models and the exhibition hall will be packed with a vast range of modelling interests. You will have the opportunity to purchase the latest products from a comprehensive selection of specialist suppliers: from materials to machinery, everything a model engineer or modeller could possibly need for their project. Refreshments available. Return leave 4.00pm. Arriving back at Godstone approx. 5.45pm.

Adult £28.95 Sen Cit £27.95 Child (14 and under) £17.95 (Inclusive of Coach/Entry to Show)

SUNDAY 23RD JANUARY

STRICTLY COME DANCING



Depart Oxted 10.15am (Route A) for the drive to the O2 where there will be time for an early lunch before taking your seats for the 1.30pm performance of Strictly Come Dancing Live. Based on the smash-hit BBC1 TV series, Strictly Come Dancing Live sees celebrity contestants and their dance partners waltz their way around the country, competing for the judges' favour and the votes of the arena audiences. See your favourite celebrities and professional dancers competing live to win the coveted glitter ball trophy. Be wowed by former contestants from the hit BBC1 television show, dancing to brand new routines performed to live music. The 2011 tour will showcase the glitz, glamour and impressive choreography as with previous years, but with a new line-up of celebrities taking part. More than 750,000 Strictly fans have now been entertained at the last three live tours. The eighth series of Strictly Come Dancing will be broadcast on BBC1 in the autumn. The last series was incredibly popular: over 11 million viewers tuned in for the grand final. Return after performance. Arriving back at Godstone approx. 5.00/5.15pm



Cost £65.75 (Inclusive of Coach/Block 110 Seats at Show)

SATURDAY 5TH FEBRUARY

FRAMED! A THRILLER BY MARTIN STERLING

Depart Oxted 10.00am (Route A) for the drive to The Mill, Sonning, a former 18th-century Flour Mill which has been converted to provide a centre of entertainment and comfort beside the Thames. With much of the original structure still retained, the Dinner Theatre gives the opportunity to enjoy a drink by the river and view the working wheel in the Cocktail Bar. The oak-beamed restaurant is the ideal setting in which to enjoy a freshly home-cooked lunch before taking our seats for the matinée performance of Framed! When Judy meets Sam on an internet dating service, she believes she has met the perfect man for her. It's taken her a long time to trust any man again after being so badly betrayed by her husband Nick, an international drugs dealer. Sam appears to be everything Judy wants and needs. The happy twosome decide to go away for a holiday. For how long? Well, say for just a weekend. Where? There's this cottage in Norfolk. Isn't it a bit isolated? Yes, but how romantic. Ideal for just the two of us. Ideal, yes. Until slowly Judy begins to realize that perhaps Sam is not the man she thought he was. Framed! is a psychological murder mystery full of enough twists and turns to keep us on the very edge of our seats. A genuine thriller with traditional frightening ingredients such as a remote cottage, wind-swept vistas, thunderstorms, threatening silhouettes at the windows, bodies buried in the garden ... but ending with a real, modern contemporary twist. Return after performance. Arriving back at Godstone by approx. 6.15pm.



Cost £54.45 (Inclusive of Coach/Two Course Lunch/Show)